



Manual

Content

Structure.....	P1
Specifications.....	P2
Mortise & Panel size.....	P3
Lock Install.....	P4
Issue cards.....	P5
Basic action.....	P6
Maintenance.....	P7

Structure

IMPORTANT SAFETY INSTRUCTIONS

1. Read these instructions
2. Keep these instructions.
3. Heed all warnings.
4. Follow all instructions.
5. Do not place any product referred in this manual long-term in the extreme environment
6. Install in accordance with the manufacturer's instructions.
7. Use accessories only specified by the manufacturer.
8. Refer all servicing to the qualified service personnel. Servicing is required when the product has been damaged in any way, such as handle or mortise is damaged, product has been exposed to rain or moisture, does not operate normally.

INTRODUCTION

Congratulations on your selection of the XEEDER Stand-alone keycard lock. This is a solution that replace traditional key locks and carry out a modern, efficient and safe management of the rooms in family and apartment.

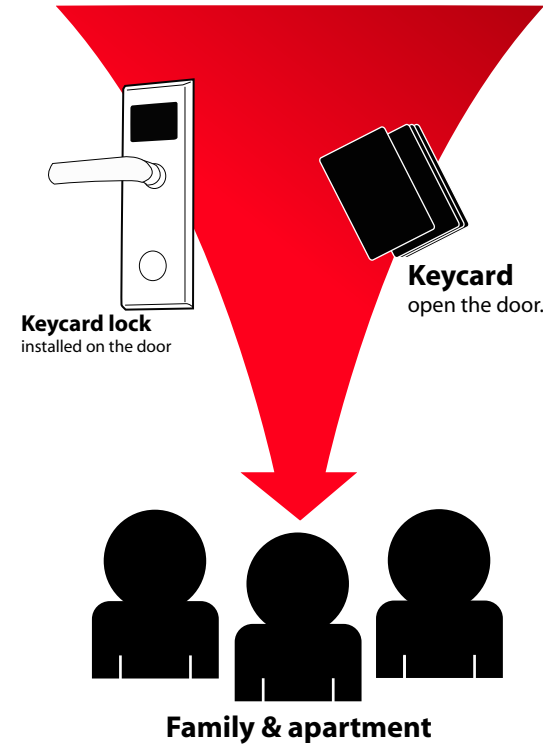
Before using the instrument, be sure to carefully read through the instructions contained in this manual. Please keep all information for future reference.

SAFETY

Xeeder Stand-alone keycard lock (RFID & IC) product has been designed with the highest concern for safety. However, any device, if used improperly, has the potential for causing unlock unable and indirect personal injury.

To help ensure accident-free operation, follow these guidelines:



1. Lock requires AA battery x4pcs to provide power keep running even not ready any card. Alkaline battery is suggested for gives a long using term (10-12months).
2. Replace new battery on time if you get low battery alarm-3beeps and red flash when read card finished.
3. You have 200 times last unlocking chance since lock gives low battery alarm.
4. Do not use battery mix new and old. It may cause short circuit to lock electronic part.
5. Lock's latch part is in mechanically, You can unlock it by using emergency key in urgently.
6. This product was designed for indoor use only including home, office and apartment.



Specifications

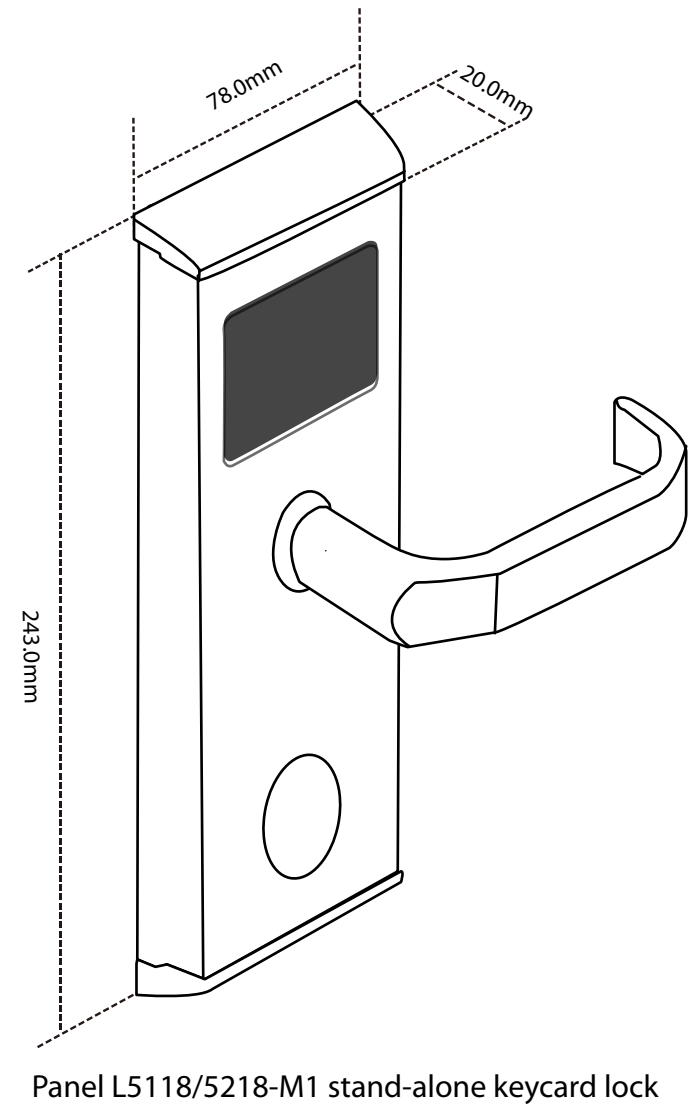
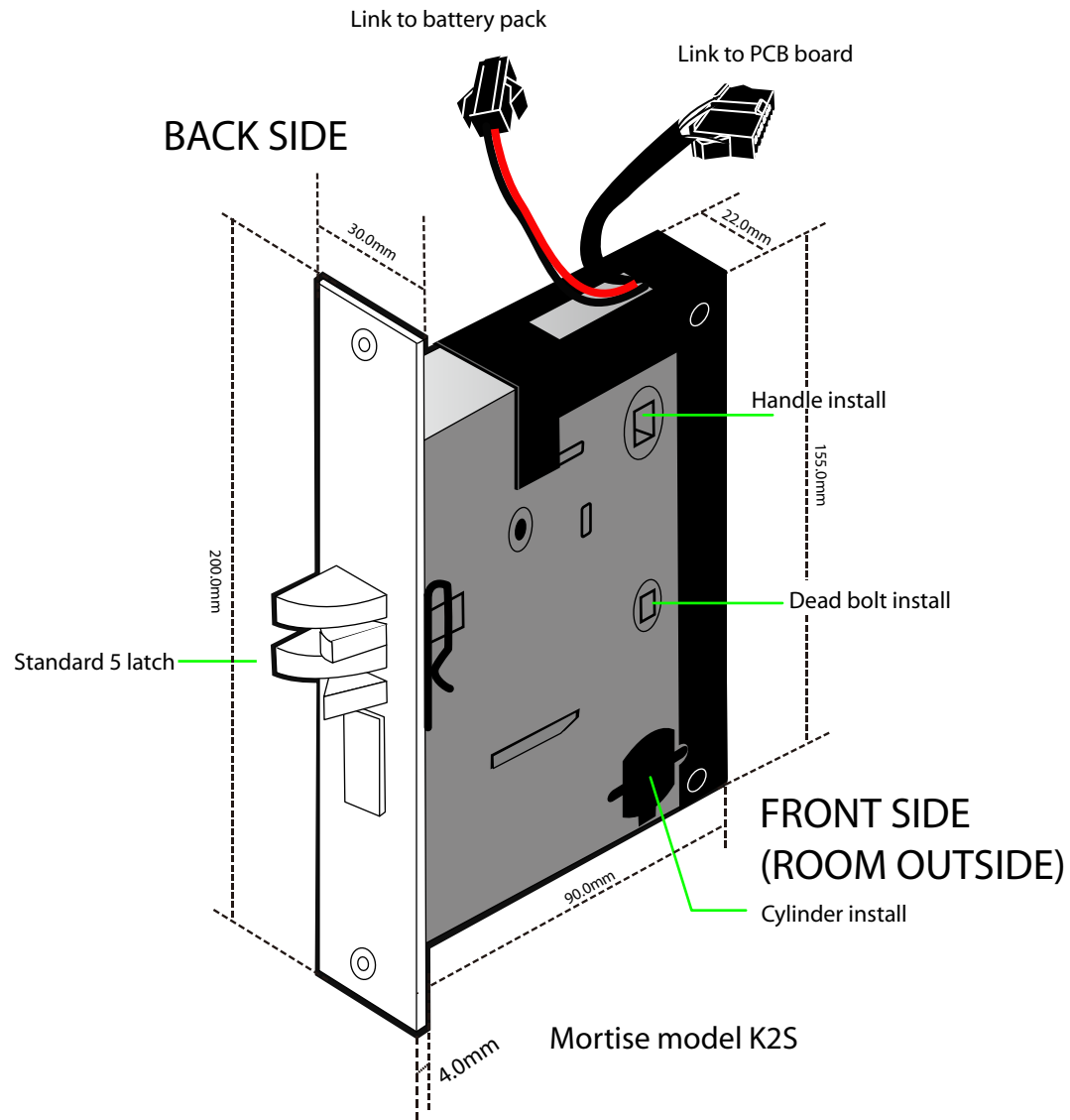
Number of user	Max 200 users keycard
Read Range	1.0-4.0cm contactless (RFID type lock)
Card format	customize in EM/Mifare 1K/IC(SLE4442) card
Unlock time	6 sec,(normal mode,automatic locking)
Lock Driving/Lock Type	Motor drive/Latch lock, deadbolt manually
LED/ Melody sound	2-Color LED(Red and blue)/built-in Buzzer
Override	Emergency key
Low Battery Alarm	Low Battery Alarm while voltage low than 4.8V , 200 opening remains
Power	4pcs AA battery Alkaline
Working Environment	32°F~ 140°F(0°C~ 60°C), 0~85% Humidity
Weight	2.9KG (Units and batteries included)
Software require	No
Battery Life	More than 25,000 opening

Compare with

	 Keycard	 HOTEL LOCK SYSTEM
Number of user	200 MAX keycard	NO limit
Software Require	No	XEEDER Hotel Lock System v4.2 up
Issue card method	on lock by Master card *	on encoder via Hotel lock system
Audit trail	No	800 lock events(IC lock 200 events)
Unlock Melody	Yes	No
Initialize Require	Don't need initialization	Lock & card requires initialized before normal using
Card Initialize Require	No	Yes
Key card using term	Forever except it be deleted	Limited. depends on the software control
Support card type	Mifare 1K/EM/IC(SLE4442) card or tag	Mifare 1K/IC(SLE4442) card
Target User	Apartment,family and office	Hotel
Work cooperate with energy saving switch	S2208/IR series able	All series able

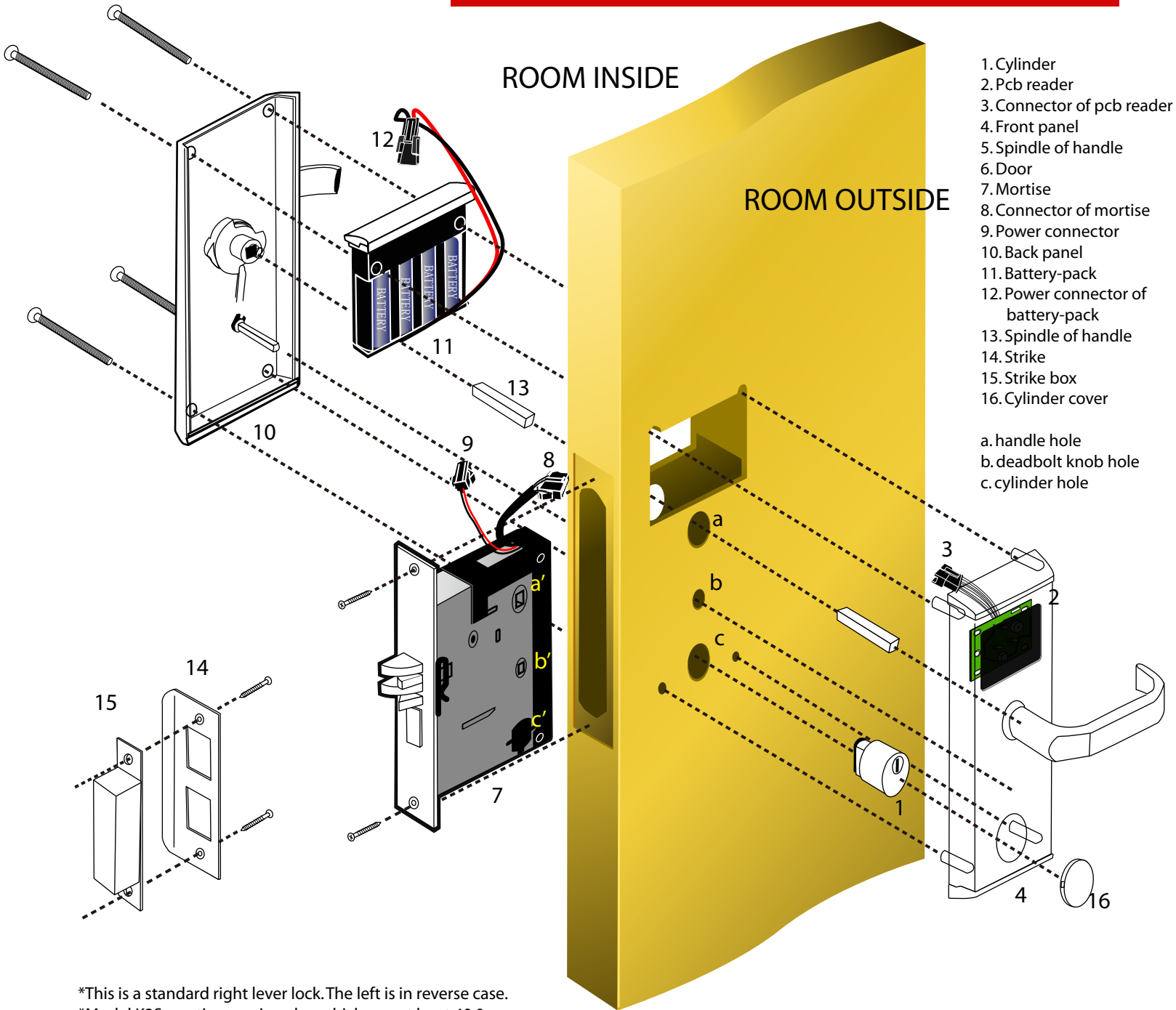
*Issue Master card please read page 5

Mortise&Panel size

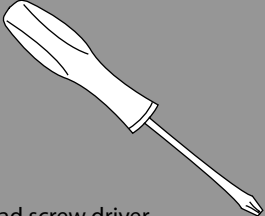


*This is a standard right lever mortise. The left mortise is in reverse case.
*Xeeder has other type mortise K1S/K1L/P2S
*Right for the hardware configuration changes without notice is reserved.

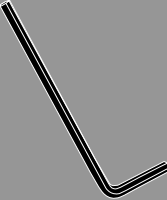
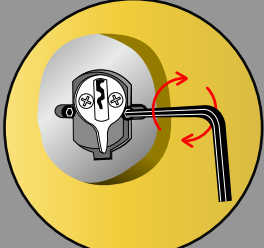
Lock Install



TOOLS

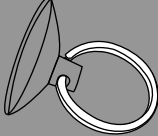
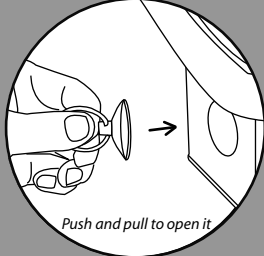


Cross-Head screw driver
An ordinary tool and should be prepared by user

back side of cylinder installed inside mortise

Inner hexagon screw driver
This tool is necessary while install cylinder in mortise.
Xeeder offer it free

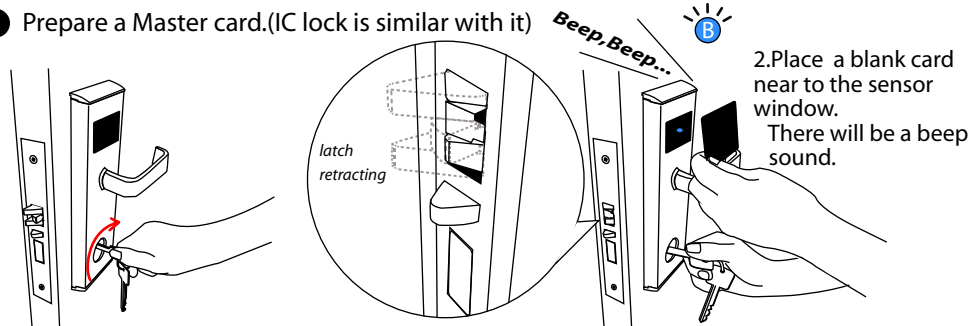
Push and pull to open it

Cylinder cover opener
This tool is used to open the cylinder cover to let emergency key insert.
Xeeder offer it free

*This is a standard right lever lock. The left is in reverse case.
*Model K25 mortise requires door thickness at least 40.0mm.
*For other thickness door please contact with us seeking other mortise solution
*Right for the hardware configuration changes without notice is reserved.

Generate cards

● Prepare a Master card.(IC lock is similar with it)



1.Insert the emergency key and turn it to make the latch keep retracting

3.Release the emergency key,finished! This card become the Master card.

2.Place a blank card near to the sensor window. There will be a beep sound.

Any card could be select to be generated a Master card.

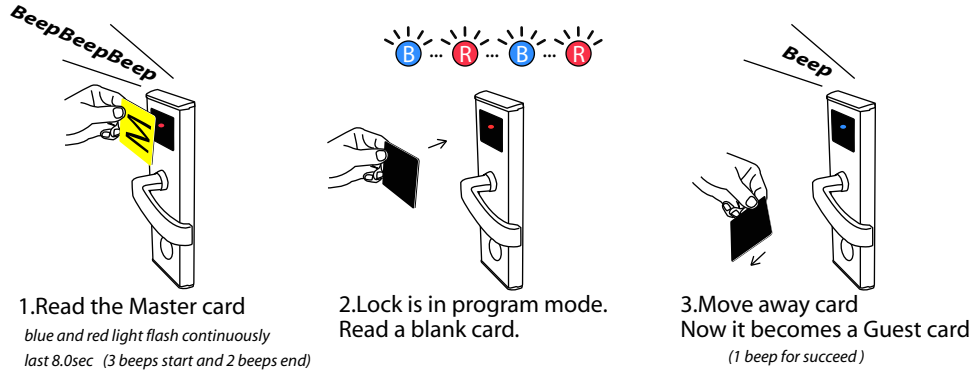
Each card has unique card No. which likes a identity ID saved in locks.

One lock can only generate only 1 Master card.



Please keep the Master card carefully. Once it been lost,you should issue a new on the lock. The lost one won't be identified again by lock which had issued a new one.

● Generate Guest cards



1.Read the Master card
blue and red light flash continuously
last 8.0sec (3 beeps start and 2 beeps end)

2.Lock is in program mode.
Read a blank card.

3.Move away card
Now it becomes a Guest card
(1 beep for succeed)

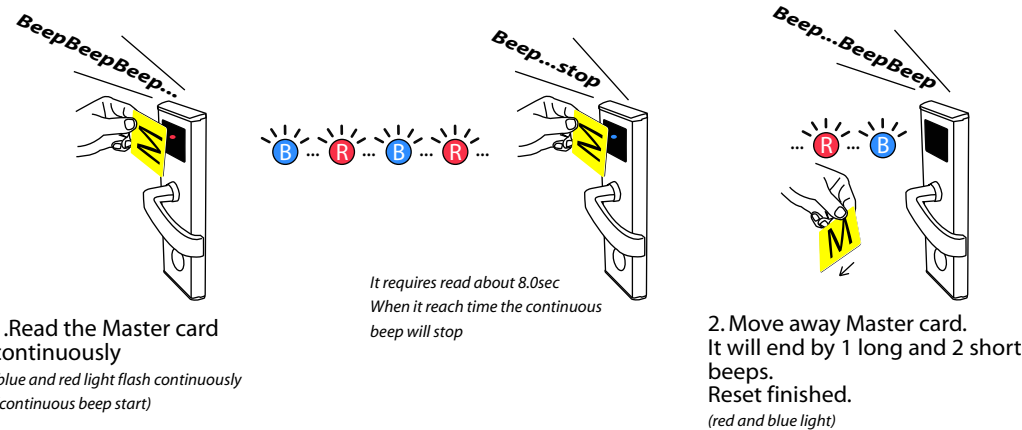
1 Master card can generate 200 Guest cards
Max for 1 same door.

No limit for 1 Master card generate guest card(s) on 1 door or many doors.
You can generate 1 guest card for all doors.



You can generate several pieces guest card at one time during the 8.0sec. Program mode will off while 8.0sec times up and you can't generate card anymore. In case you have not finished all cards you can do make the lock in program mode again to continue. With the same way, you can delete a guest card or several at one time. If you want to make the cards invalid which is not in your hand, you could do reset on the doors of that guest card. Reset will makes lock's memory empty.

● Reset

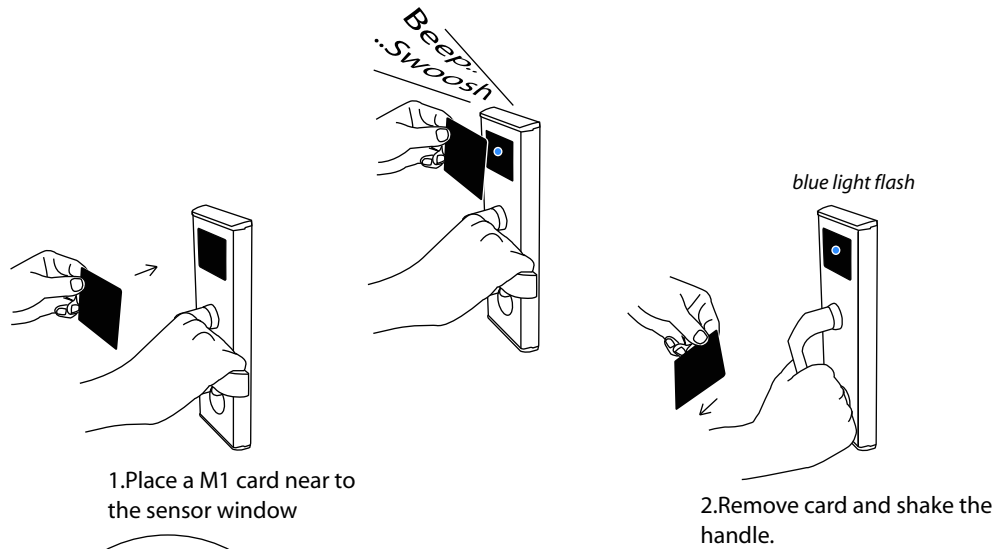


1.Read the Master card continuously
blue and red light flash continuously
(continuous beep start)

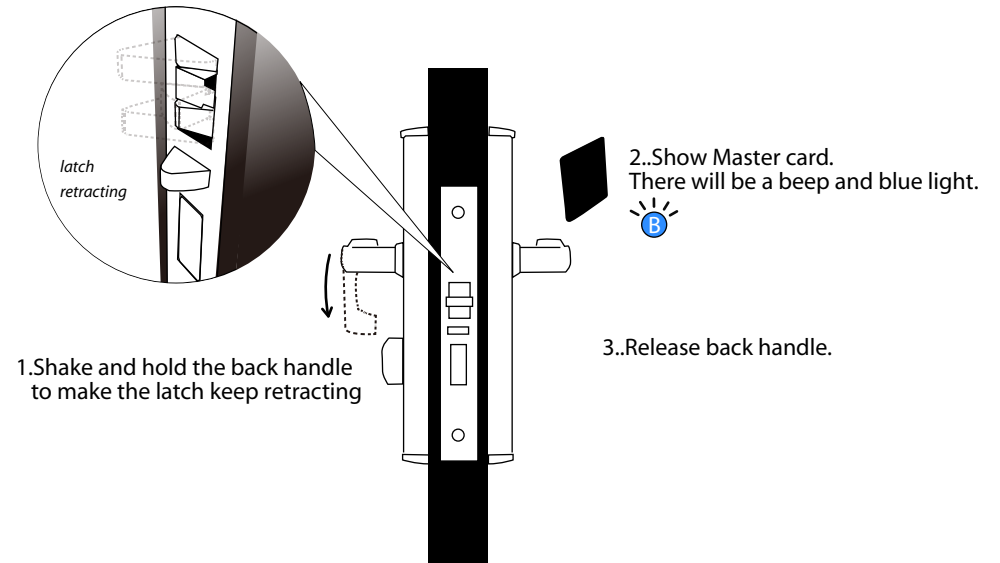
It requires read about 8.0sec
When it reach time the continuous beep will stop

2. Move away Master card.
It will end by 1 long and 2 short beeps.
Reset finished.
(red and blue light)

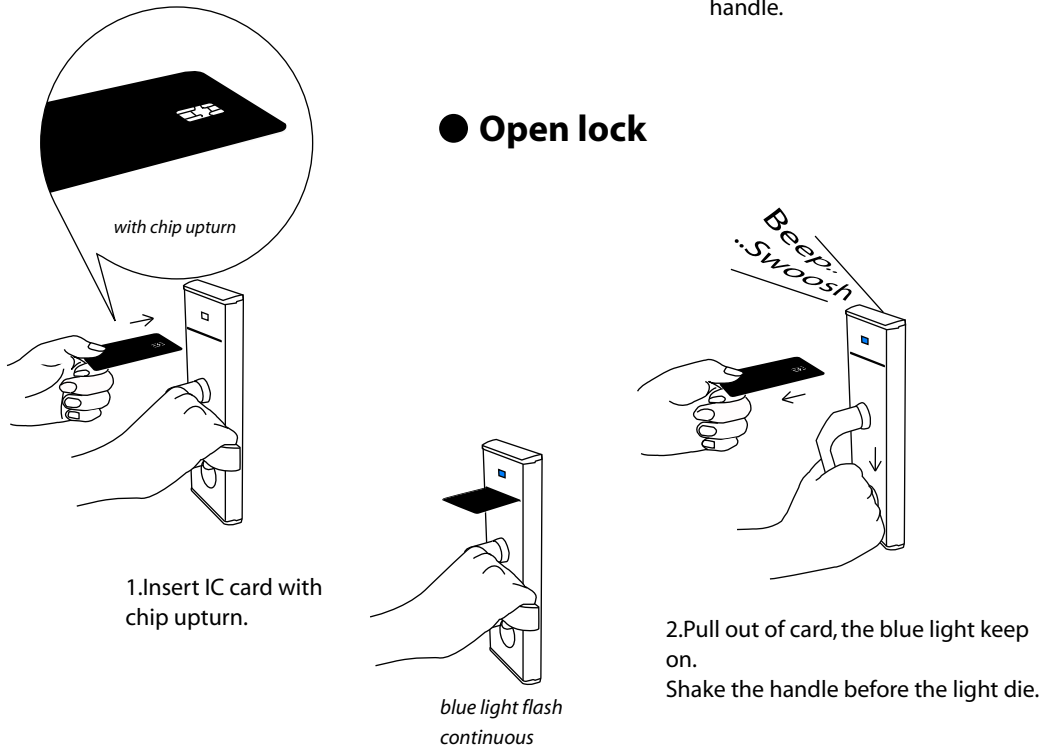
Basic action



● On/Off PASSAGE mode



● Open lock

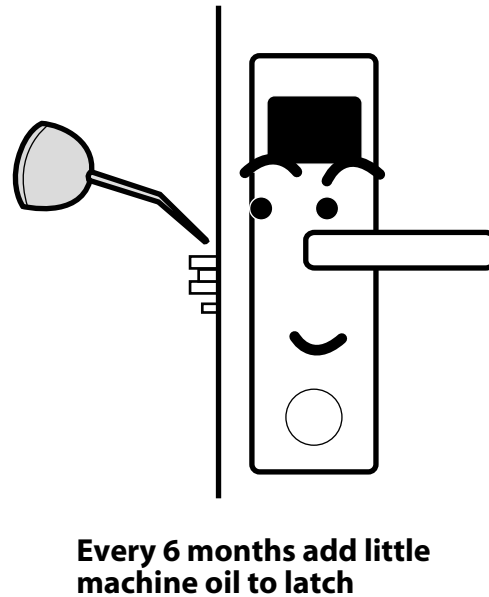
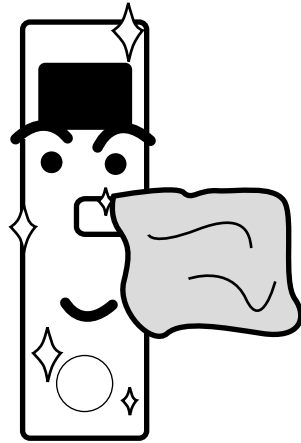


	Passage	Normal
card required /unlock way /beep	NO/ just shake handle to unlock /No beep	YES/ read card and shake handle, Automatic locking /1 beep
Read guest card /beep	off passage mode and requires guest card to on passage mode to unlock /1 beep	Normal open and always requires card to unlock /1 beep
Read guest card again /beep	On passage mode and turn back to unlock by just shake handle /2 beeps	Normal open and always requires card to unlock /1 beep
switch normal/passage	Repeat action 'On/Off PASSAGE mode'	action 'On/Off PASSAGE mode'

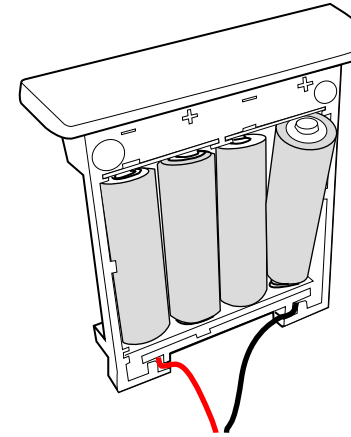
*cycle switch on/off passage mode by read Master card

Maintenance

● Clean



● Replace battery

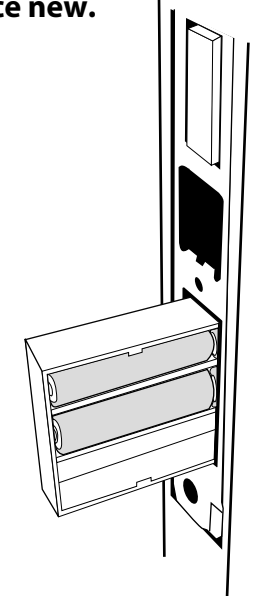



Battery-pack TYPE-A

1. Release screws from back panel
2. Take out battery-pack (keep power connector linked) and replace new.
3. Recover

Battery-pack TYPE-B

1. Uninstall the flank plate
2. Take out battery-pack and replace new.
3. Recover



 Lock's clock will be frozen during the moment replace new battery.
If battery run out completely before replace new, we suggest you set Time again (Initialize STEP 2,

● Cards



No high temperature
Keycard is made of plastic which will melt down in high temperature.



No long term dunk in water
Long term dunk in water will cause inner data lost



No overexert bend
Once card was broken, it can't recover again.



Keep card clean and use it properly could make cards in a long life.

www.xeeder.us

2008 Xeeder Technology Co., Limited. All rights reserved.

3rd Floor, Huichang building, Bantian Buji Longgang, Shenzhen, China

Tel: 0086-755-83663830 / Fax: 888 extension

Email: sales@xeeder.com